



Strategie

BizArch

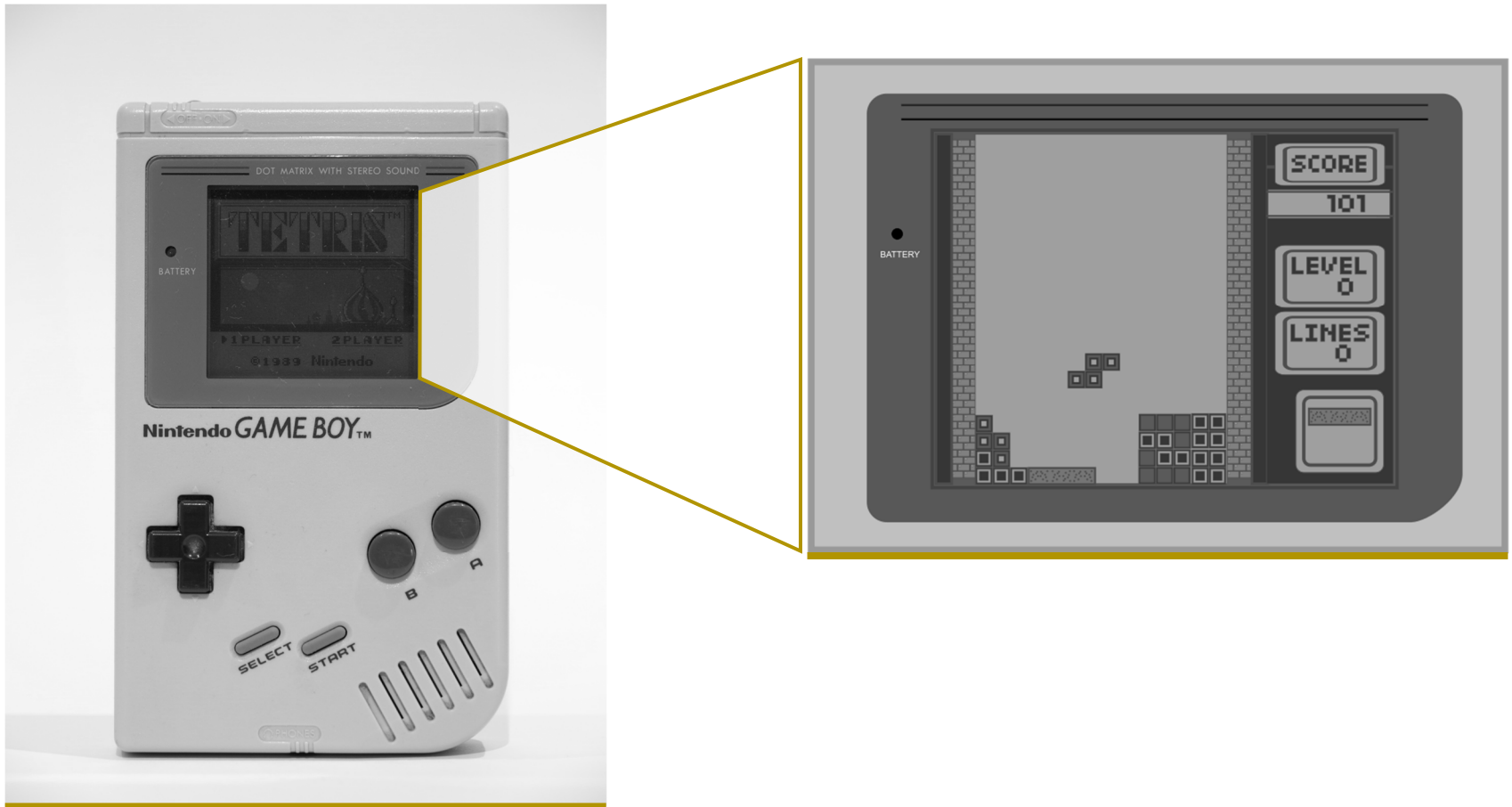
Prozesse

Business Architecture – Brücke zwischen Strategie und Prozessen

WorkflowAnalytica 2022

Einführung

Es „regnet“ neue Themen, immer schneller



Einführung

Neue Themen erzeugen umfassenden Veränderungsbedarf



Omnichannel



Internet of Things



Circular Economy



Remote Work



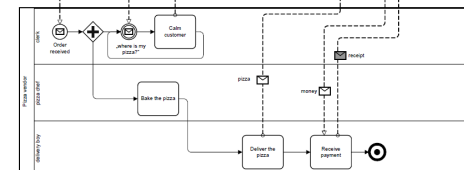
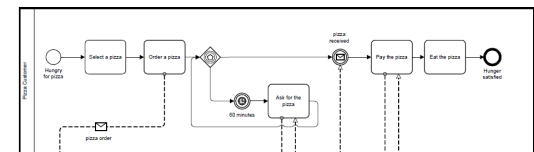
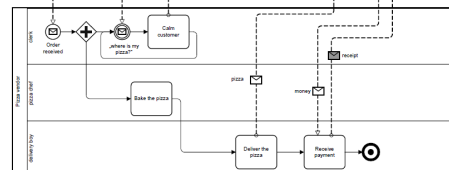
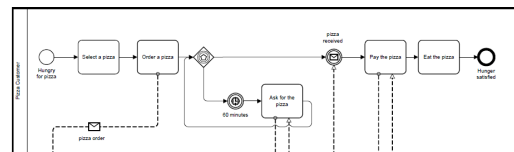
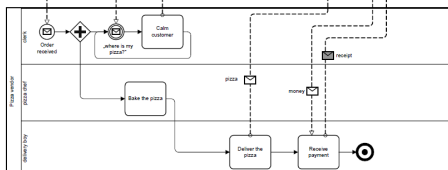
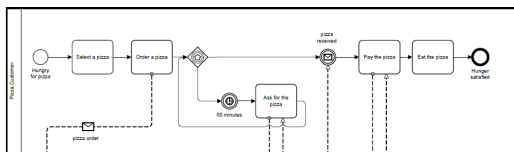
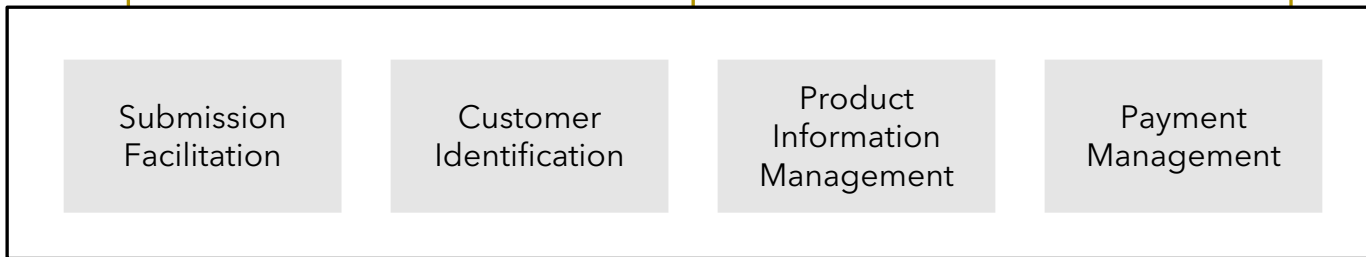
24/7-Society



Artificial Intelligence

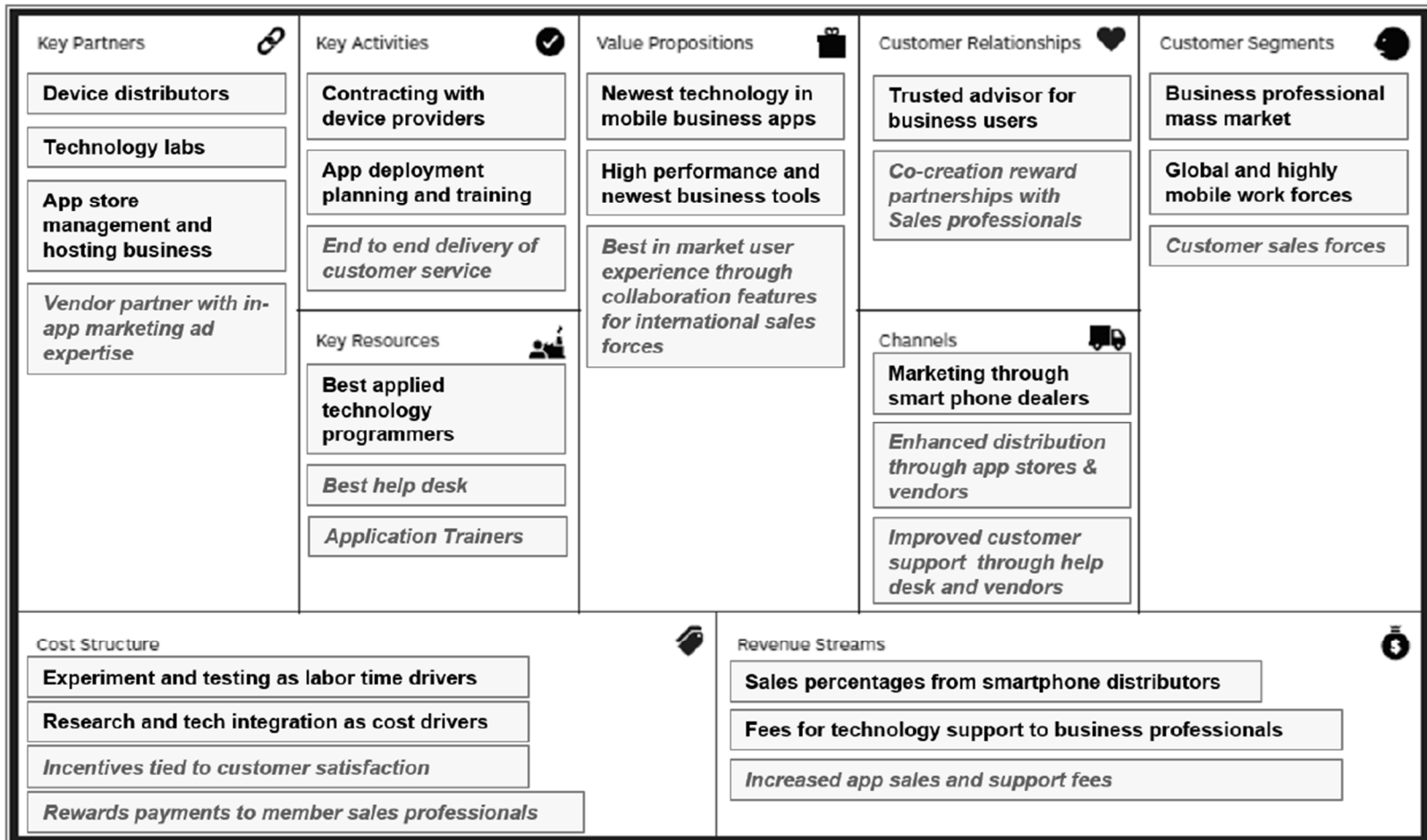


Omnichannel



Business Architecture

Strategien münden zunächst in einem Geschäftsmodell



Business Architecture
Damit ist das „operative Ufer“ noch nicht erreicht

Strategy

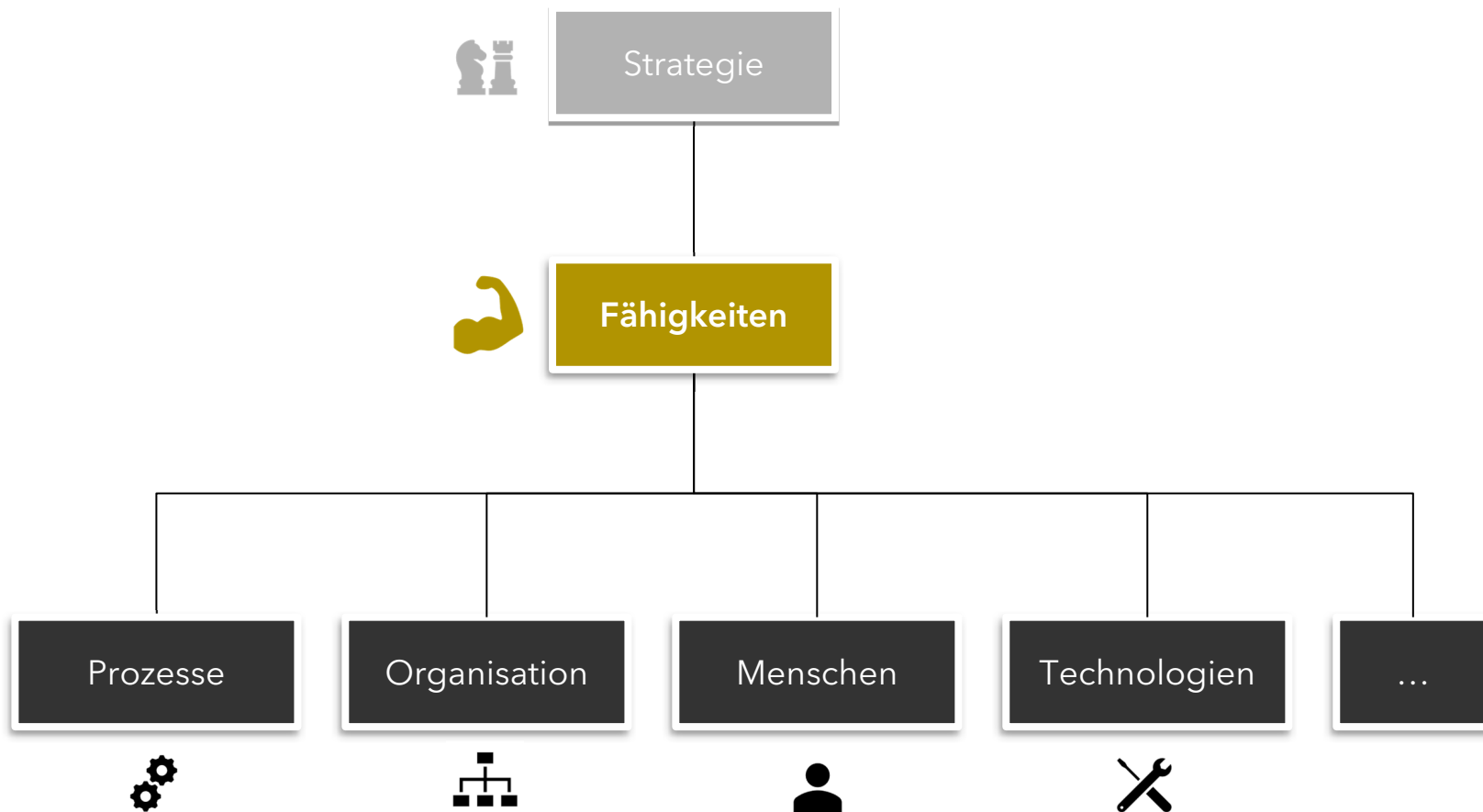


Execution

BRIDGING THE GAP

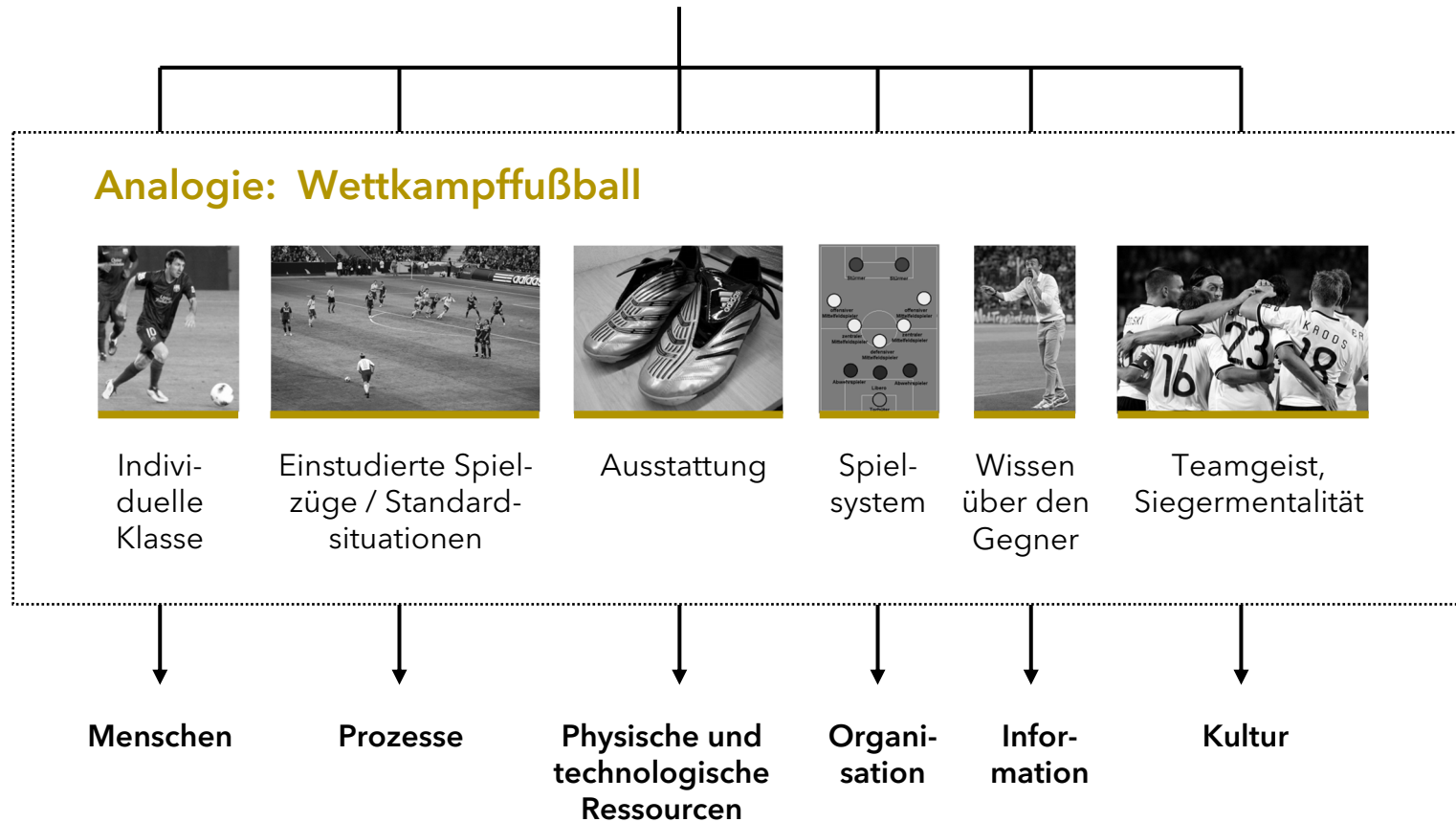
Business Architecture

Zentraler Aspekt der Brückenbildung sind Fähigkeiten





Worauf gründet sich eine **Capability**?



<https://acrossandahead.com/en/blog-en/on-what-constitutes-a-capability/>

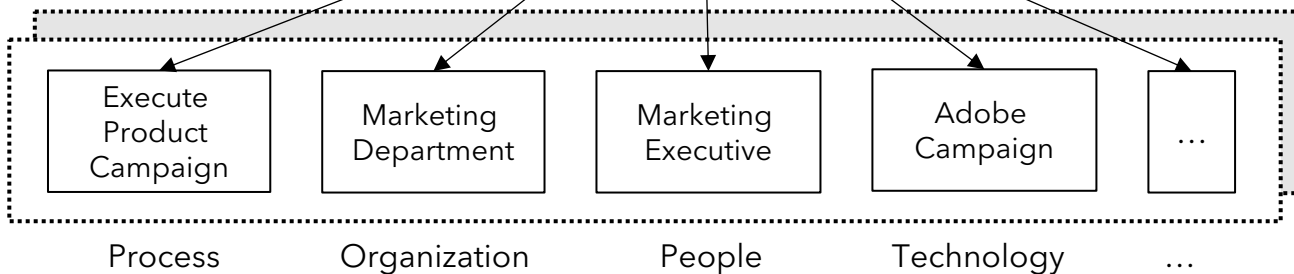
Capability

“A particular ability or capacity that a business may possess or exchange to achieve a specific purpose or outcome.”

WHAT



HOW

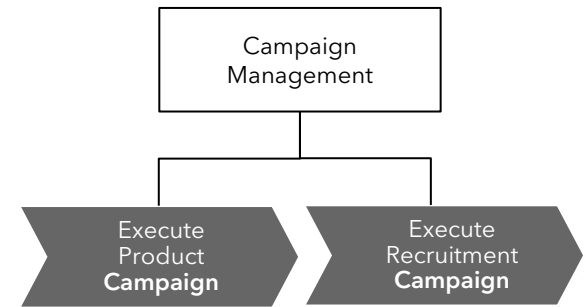
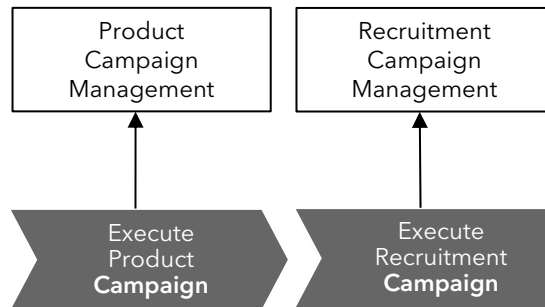


Referenz: A Guide to the Business Architecture Body of Knowledge ® (BIZBOK ® Guide), Version 10.0.

? Gilt es denn nicht zu unterscheiden zwischen Produkt- und Recruiting-Kampagnen?

WAS

WIE

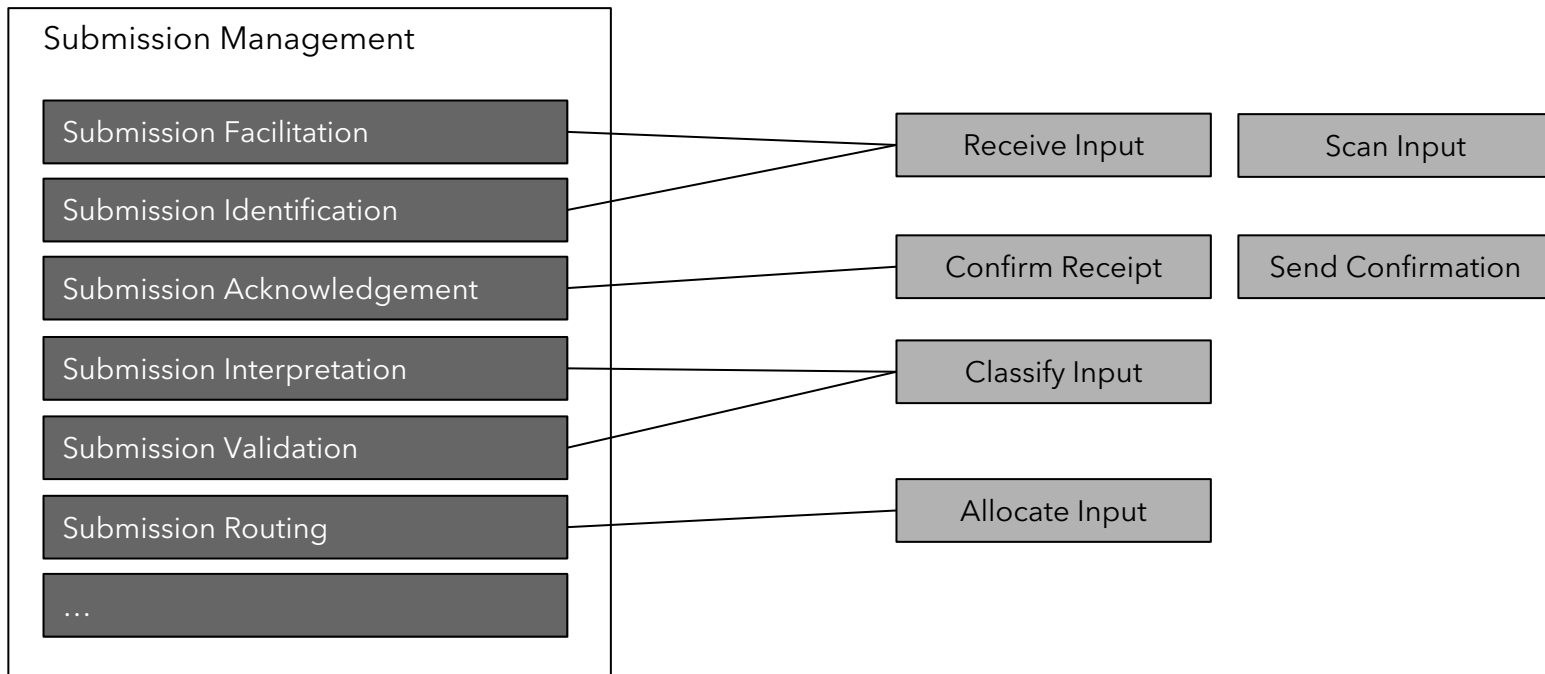


WAS durch das WIE definiert

WAS abstrahiert vom WIE

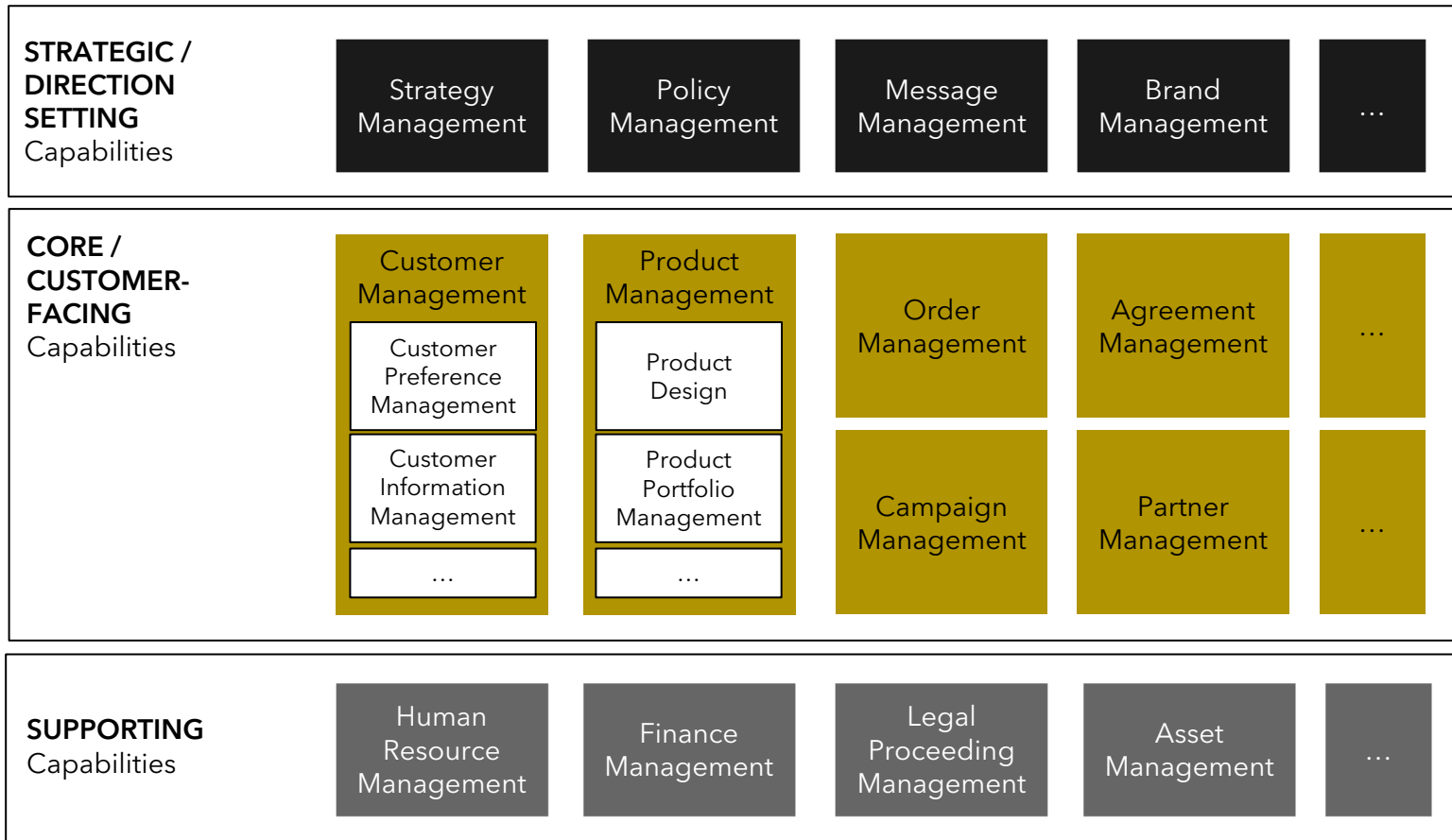
CAPABILITY

ACTIVITIES / PROCESS STEPS

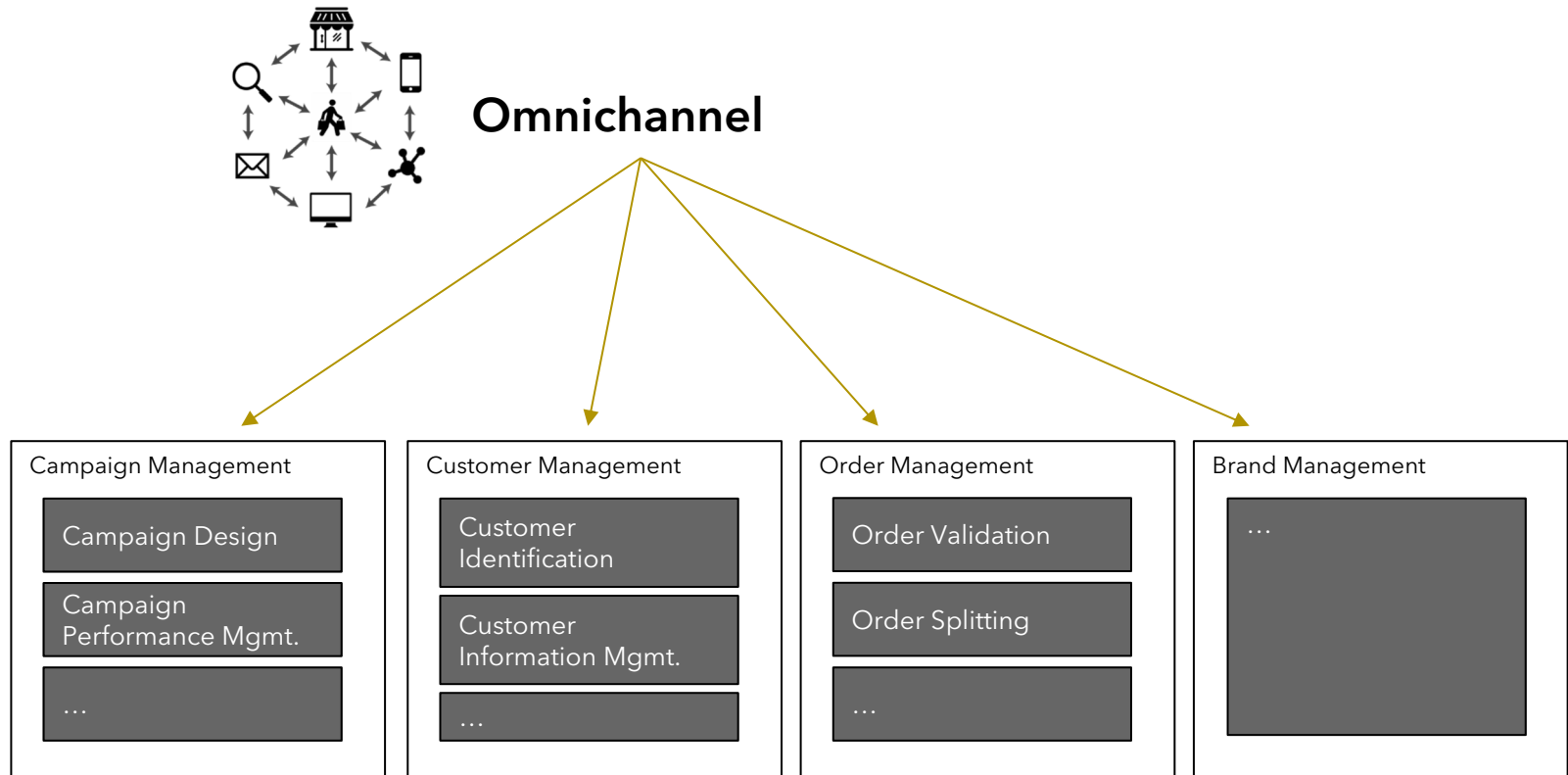


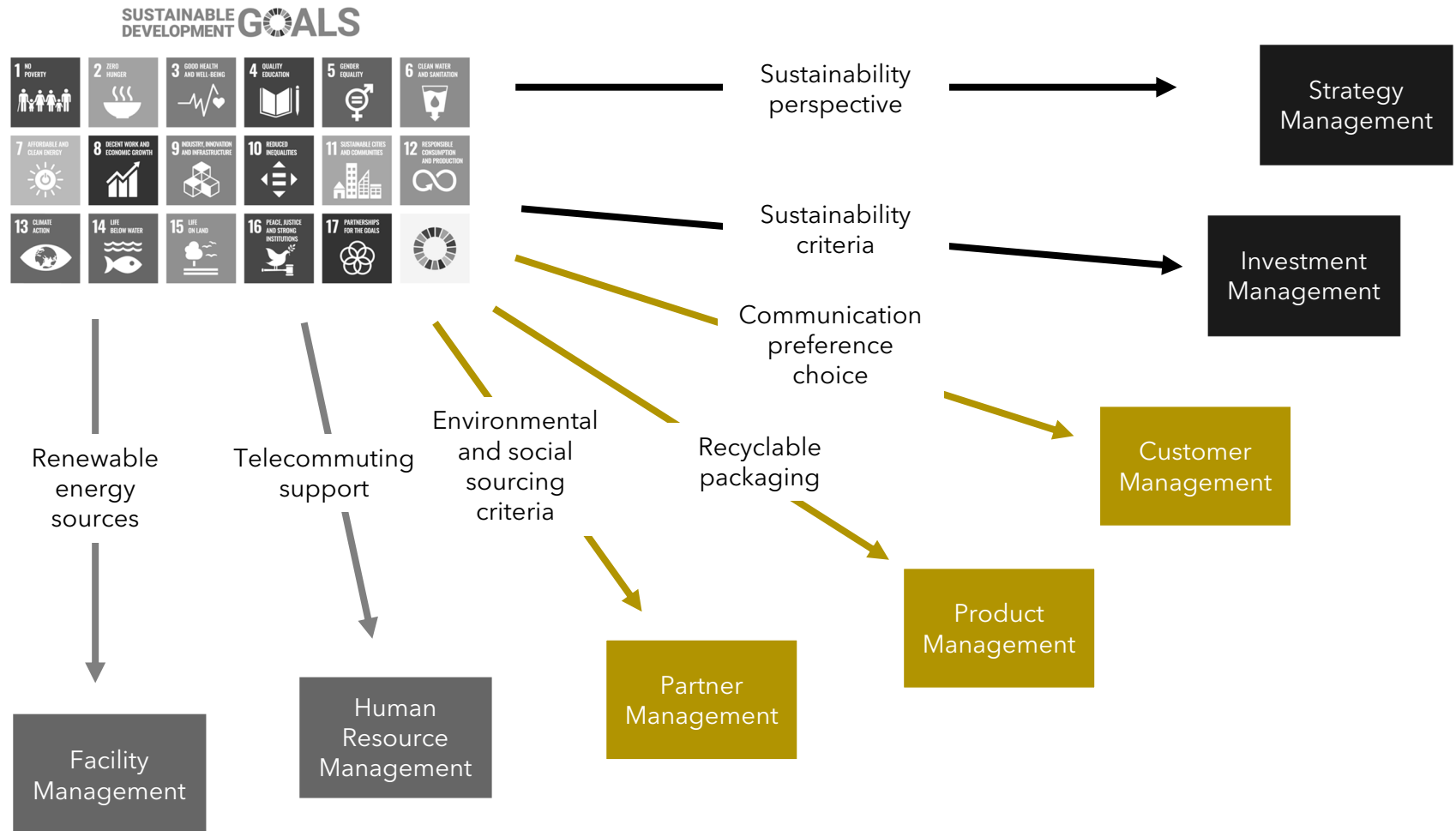
Business Architecture

Es entsteht ein Capability Map



Referenz: A Guide to the Business Architecture Body of Knowledge ® (BIZBOK ® Guide), Version 10.0.





Business architecture represents **holistic, multidimensional business views** of: capabilities, end-to-end value delivery, information, and organizational structure; and the relationships among these business views and strategies, products, policies, initiatives, and stakeholders.

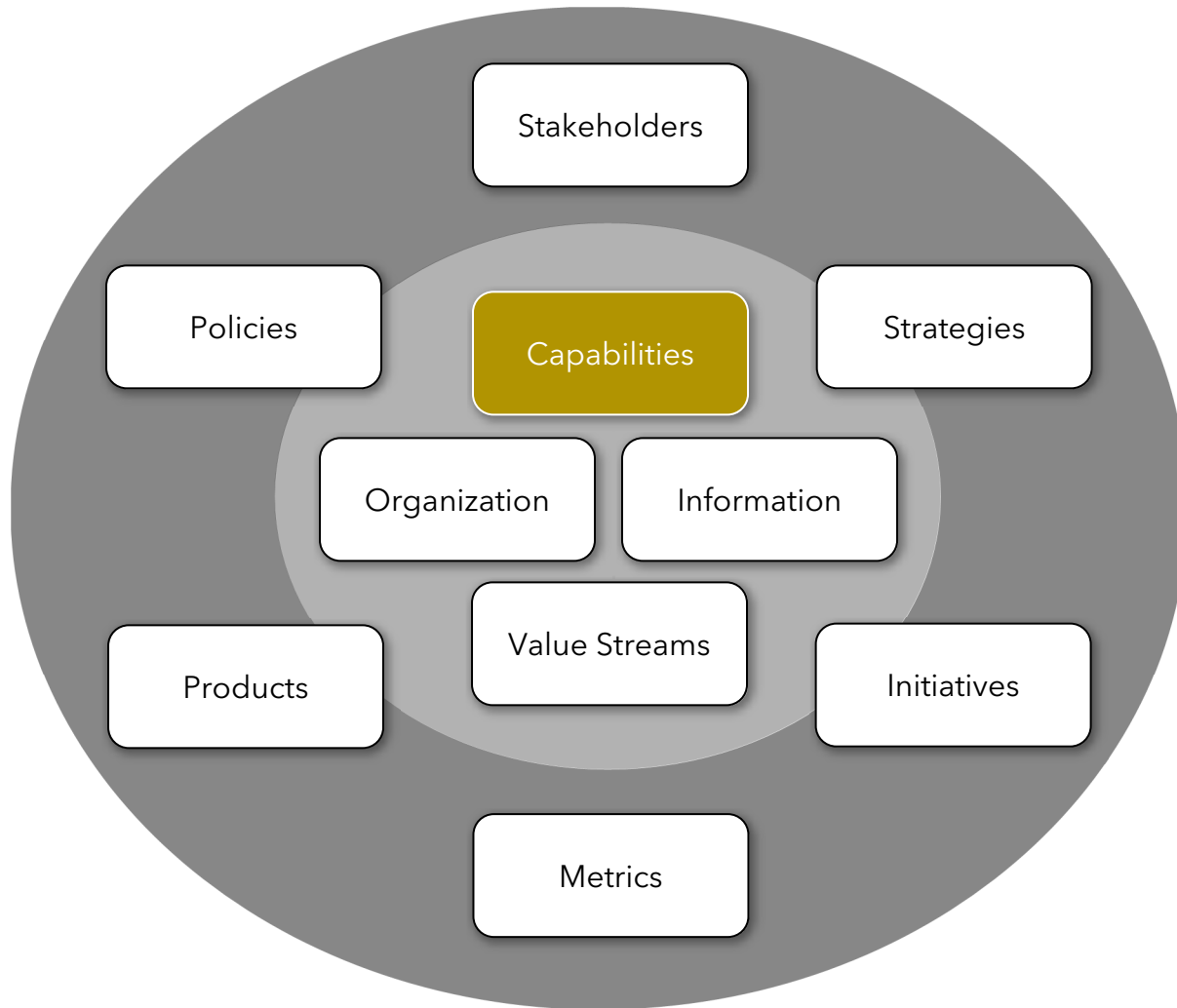
[BIZBOK® Guide]



- A fundamental aspect of business architecture is that it represents a **business ecosystem**, signifying that a business does not begin or end at the boundaries of the enterprise.
- In effect, business architecture reflects **multidimensional aspects of a real-world business in an abstract format**.

Business Architecture

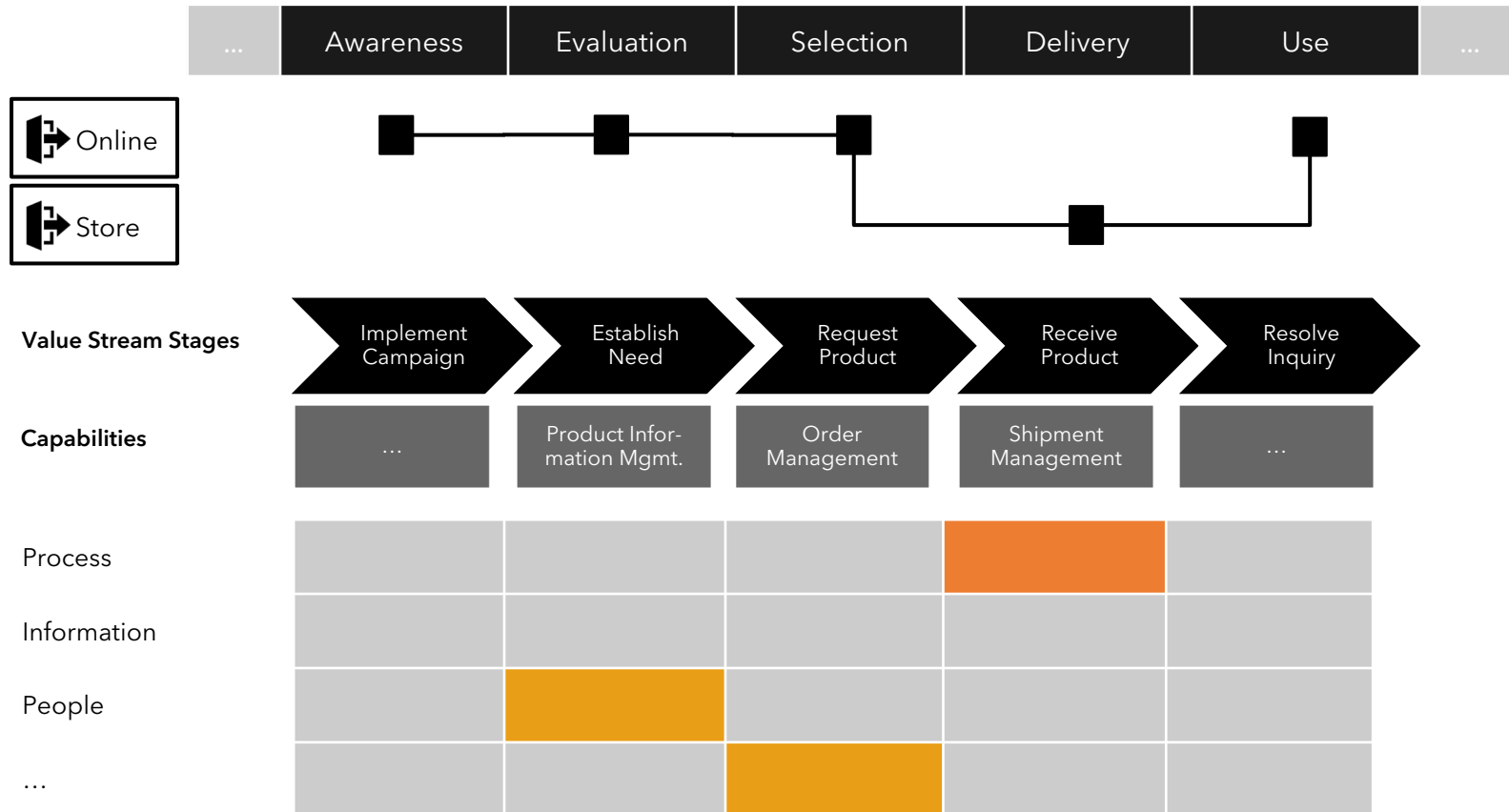
Der BIZBOK® Guide unterscheidet diverse Domänen

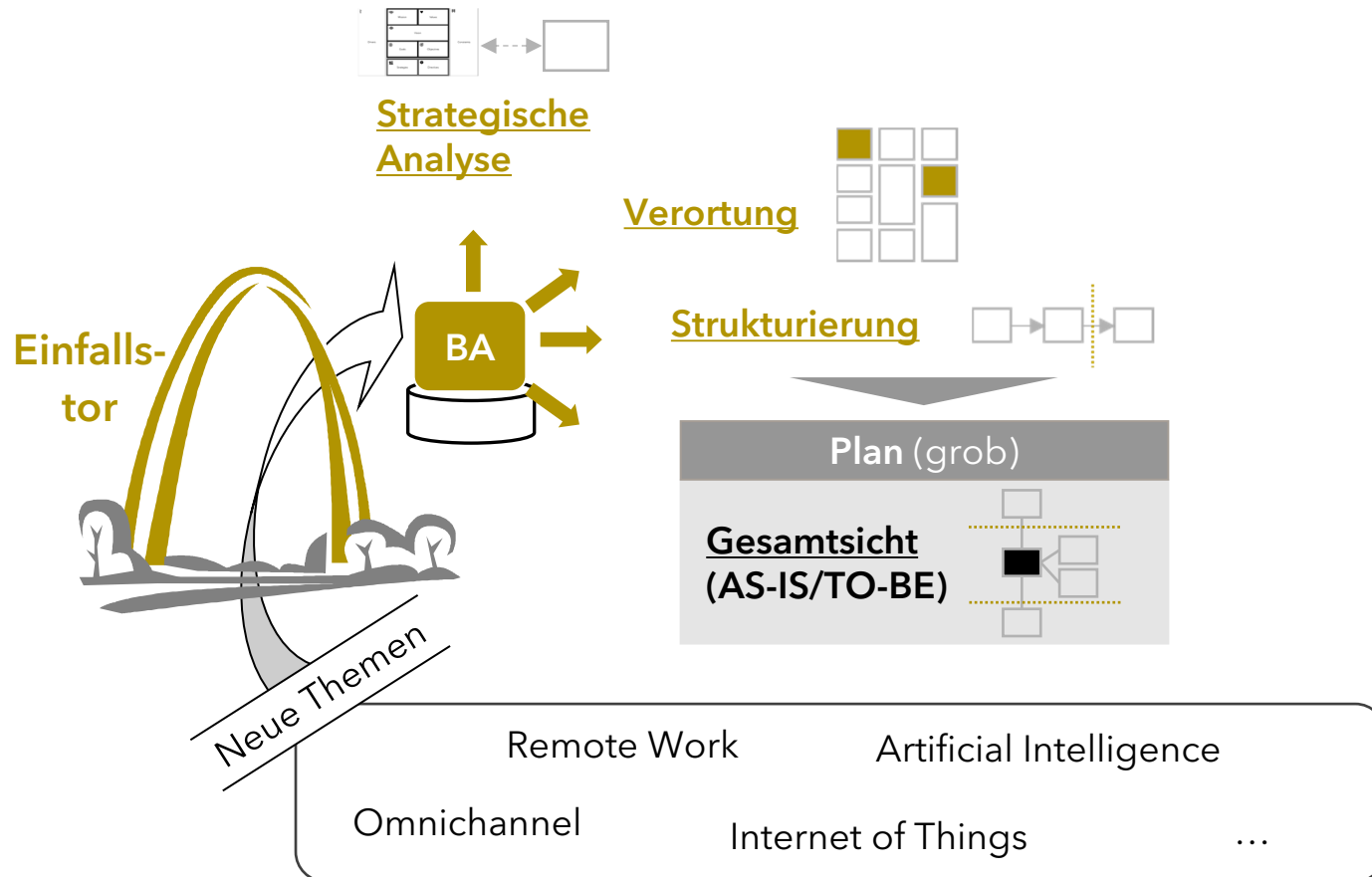


Referenz: BIZBOK® Guide, Version 10.0.

Business Architecture

Business Architecture schafft somit Analysepfade

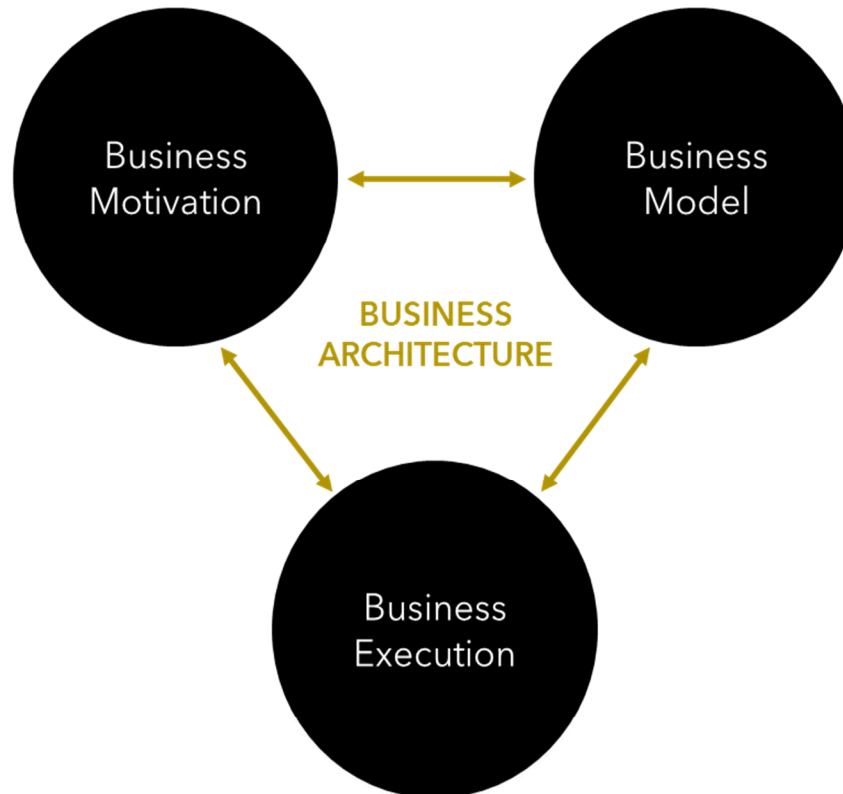




Abschluss und Fazit

Business Architecture heißt „Connecting the Dots“

- Why do we exist?
- What do we stand for?
- What do we want to achieve?
- What is our course ahead to get there?



- What value do we offer to whom?
- How do we create and deliver value?
- How do we capture and disseminate value?
- How do we sustain our value capture?

- What are we able to do?
- How do we do things?
How do we operate?

Vielen Dank für Ihre
Aufmerksamkeit



Dr. Daniel Simon
Geschäftsführer

ACROSS & AHEAD Advisory GmbH
Christophstraße 15-17
50670 Köln

T +49 221 567 972 94

daniel.simon@acrossandahead.de
www.acrossandahead.de



<https://www.linkedin.com/in/danielsimon2/>
<https://www.linkedin.com/company/acrossandahead>



<https://twitter.com/dsimoncg>
<https://twitter.com/acrossandahead>